

Disc Brake Chambers

SPRING TYPE



- ▶ **Versatile application across all mainstream market products**
- ▶ **Easy installation, saving time and cost of maintenance and service**
- ▶ **High-quality and heavy-duty, extended life and resisted to corrosion**
- ▶ **Automated production line unifies quality standard**
- ▶ **Strict quality controls for leakage and durability**
- ▶ **Testing exceeds SAE standard**
- ▶ **Individual serial for traceability and fighting counterfeit fraud**
- ▶ **Various sizes and multiple options**
- ▶ **OEM customisable according to requirement**

Metro Bearing & Automotive Ltd., a specialist in truck and trailer components located in Hong Kong, had expanded remarkably over the last 20 years, specialising in a wide range of automotive parts and accessories.

MBA

**METRO BEARING &
AUTOMOTIVE LIMITED**



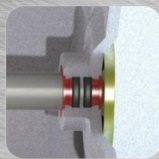
MODELS

(*) = Subjected to change without further notice

| Type | MBA Ref. (*) | Reference OE No. | Stroke | Thread |
|--------|------------------|------------------|--------|-------------|
| T16 | DS16-028226 | K028226 | 57mm | 3/8"-18NPTF |
| T18 | DS18-028022 | K028022 | 63mm | 3/8"-18NPTF |
| T20 | DS20-028225 | K028225 | 63mm | 3/8"-18NPTF |
| T24 | DS24-028252 | K028252 | 63mm | 3/8"-18NPTF |
| T16/24 | DS1624-544440020 | 544440020 | 57mm | M16 x 1.5 |
| T16/24 | DS1624-544440010 | 544440010 | 57mm | M16 x 1.5 |
| T16/24 | DS1624-042457 | K042457 | 57mm | 3/8"-18NPTF |
| T18/24 | DS1824-043329 | K043329 | 57mm | 3/8"-18NPTF |
| T20/24 | DS2024-041960 | K041960 | 63mm | 3/8"-18NPTF |
| T24/24 | DS2424-043270 | K043270 | 63mm | 3/8"-18NPTF |

KEY FEATURES

- Durable **POWER SPRINGS** with corrosion resisting coating provide optimal output force and extended life
- **PUSHROD** is stud welded to the plate ensures the bond is vibration-proof and resistant to breaking
- Heavy-duty **DIAPHRAGM** able to withstands 1.2 million times braking cycle
- **DOUBLE O-RINGS** and **BUSHINGS STRUCTURE** provide the best leak protection and wear resistance. High-quality O-rings maintain flexibility even at -55°C
- **PERMANENTLY MECHANICALLY SEALED** brake chambers impedes tampering and prevents accident during service
- High-quality 11-gauge **STEEL STURDY HOUSING** balances lifespan and strength with weight. Electro-painted for excellent corrosion protection
- **CENTER BODY** built with ADC12-grade aluminum reduces chamber weight while provides high-strength and corrosion resistance
- Grade 8.8 high strength **BOLT FASTENER**



Notes



Metro Bearing & Automotive Limited

Unit A-C, 11/F, Block A, Marvel Industrial Building,
No. 25-31 Kwai Fung Crescent, Kwai Chung, N.T.,
Hong Kong

Tel: (852) 2409 7786

Email: sales@metrobearing.com

www.metrobearing.com