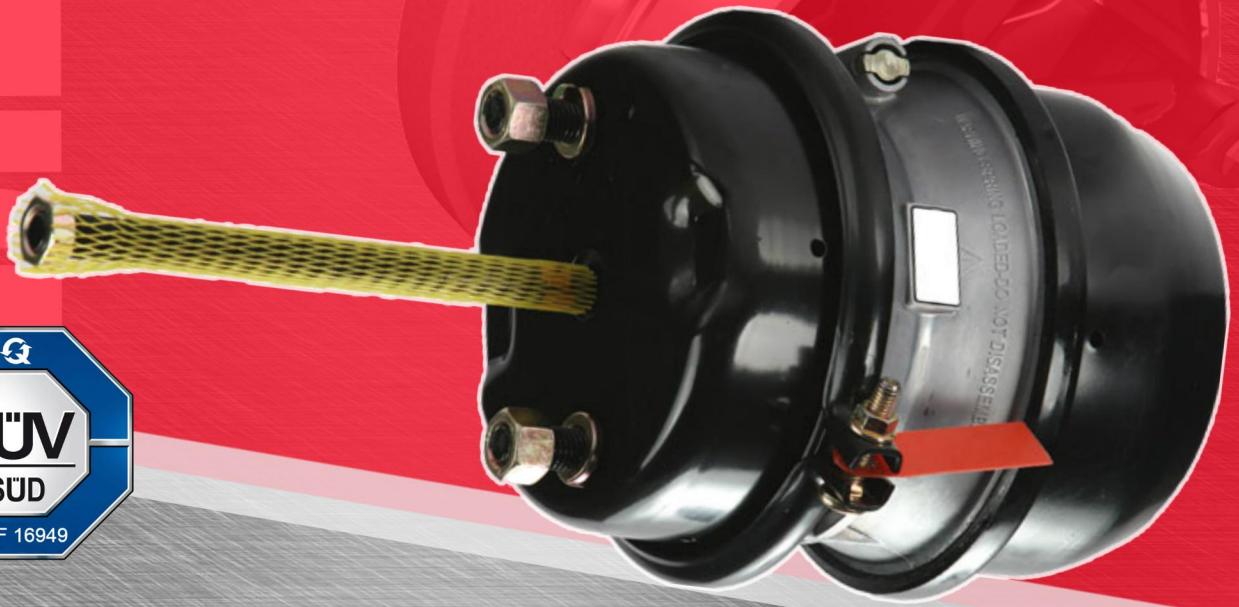


Air Brake Chambers



- ▶ **Versatile application across all mainstream market products**
- ▶ **Easy installation, saving time and cost of maintenance and service**
- ▶ **High-quality and heavy-duty, extended life and resisted to corrosion**
- ▶ **Automated production line unifies quality standard**
- ▶ **Strict quality controls for leakage and durability**
- ▶ **Testing exceeds SAE standard**
- ▶ **Individual serial for traceability and fighting counterfeit fraud**
- ▶ **Various sizes and multiple options**
- ▶ **OEM customisable according to requirement**

Metro Bearing & Automotive Ltd., a specialist in truck and trailer components located in Hong Kong, had expanded remarkably over the last 20 years, specialising in a wide range of automotive parts and accessories.

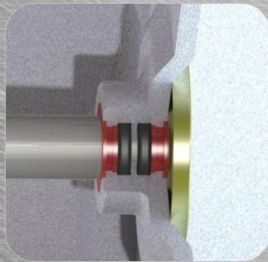


MBA

**METRO BEARING &
AUTOMOTIVE LIMITED**

KEY FEATURES

Double O-RINGS and BUSHINGS structure provide the best leak protection and wear resistance. High-quality O-rings maintain flexibility even at -55°C



PUSHROD is stud welded to the plate ensures the bond is vibration-proof and resistant to breaking



Heavy-duty DIAPHRAGM able to withstands 1.2 million times braking cycle



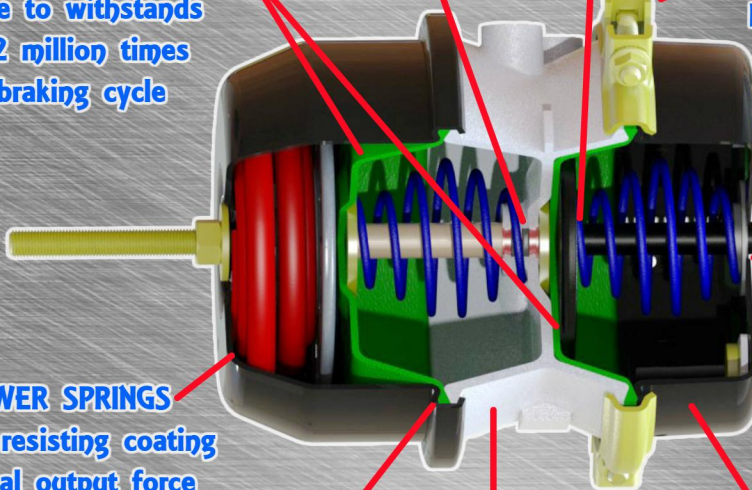
DOUBLE BOLT CLAMP BAND design for service chamber balances safety with ease of service

Grade 8.8 high strength BOLT FASTENER



STROKE ALERT INDICATOR will be visible and reveals the need for service

Durable POWER SPRINGS with corrosion resisting coating provide optimal output force and extended life



Permanently mechanically SEALED PARKING CHAMBER impedes tampering and prevents accident during service

CENTER BODY built with ADC12-grade aluminum reduces chamber weight while provides high-strength and corrosion resistance

High-quality 11-gauge STEEL sturdy HOUSING balances lifespan and strength with weight. Electro-painted for excellent corrosion protection

Notes



Metro Bearing & Automotive Limited

Unit A-C, 11/F, Block A, Marvel Industrial Building,
No. 25-31 Kwai Fung Crescent, Kwai Chung, N.T.,
Hong Kong

Tel: (852) 2409 7786

Email: sales@metrobearing.com

www.metrobearing.com